

# Welcome to the Kaiser Permanente Administrative Fellowship Program 2020 Webinar!

*We'll be getting started shortly.  
Please disable your cameras and mute your microphones.  
Thank you!*





# Kaiser Permanente Administrative Fellowship 2019-2021 Cohort



# Who's on the Call?

---



**Victoria Mevs, MHA**

2<sup>nd</sup> Year SCAL

Administrative Fellow



**Sofia Porter-Castro, MPH**

2<sup>nd</sup> Year SCAL

Administrative Fellow



**Marisa Polonsky, MHA**

2<sup>nd</sup> Year SCAL

Administrative Fellow



**Amanda Markusson,  
MSN, MHA, FNP-BC**

2<sup>nd</sup> Year SCAL

Administrative Fellow



**Travis Woodburn, MHA**

2<sup>nd</sup> Year NCAL

Administrative Fellow

**Nim Sangera, MHSA**

2<sup>nd</sup> Year NCAL

Administrative Fellow



**Sayali Khare, MHSA**

2<sup>nd</sup> Year NCAL

Administrative Fellow



# Have Questions?

- Go to **www.sli.do** on your desktop or mobile phone browser.
- Type in event code **38875**
- Ask questions and upvote your favorites!



# Today's Agenda

**Kaiser Permanente Background**

**Program Overview**

**Application Process**

**Q & A**

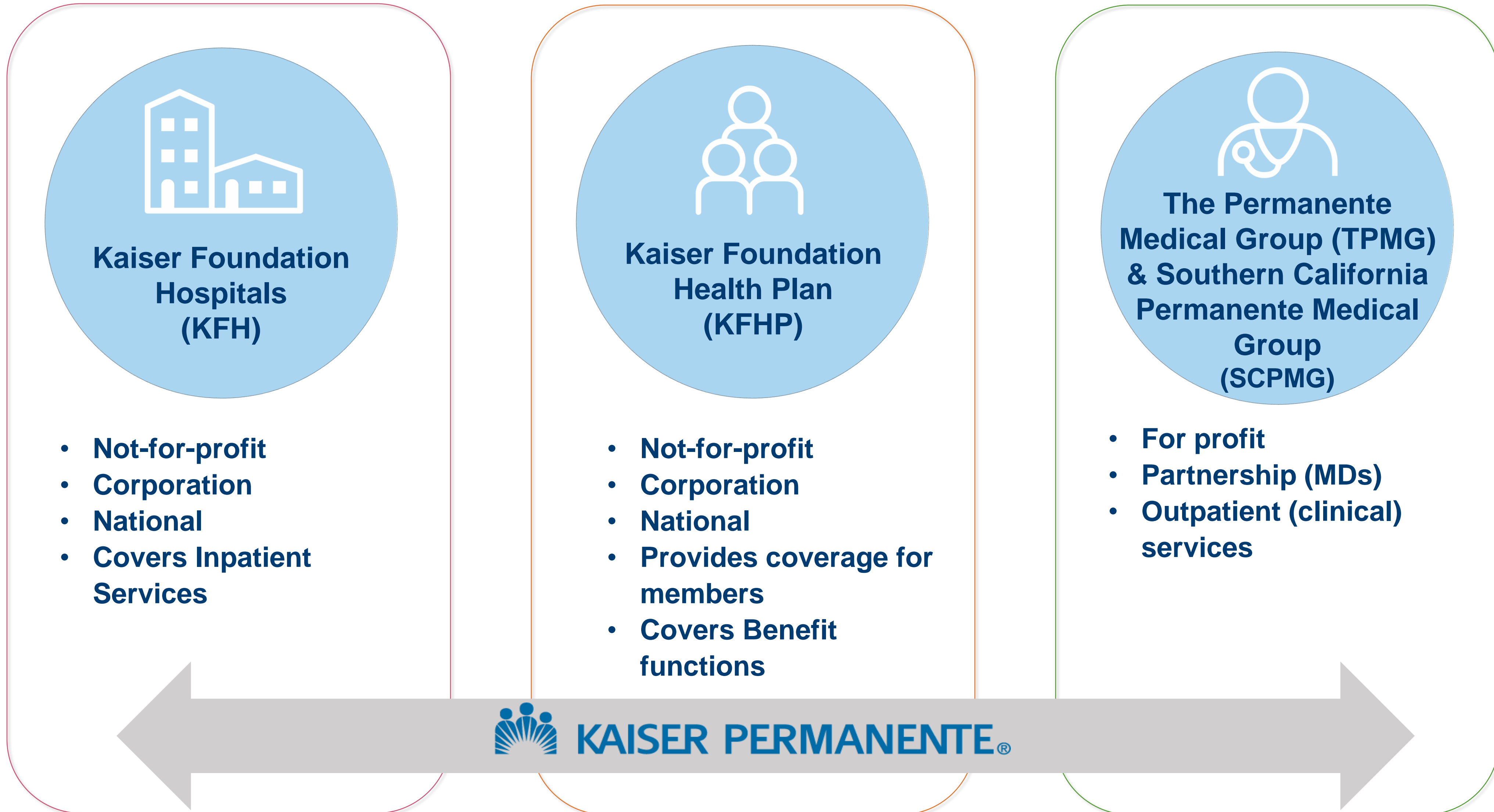


# Kaiser Permanente as an Organization

Kaiser Permanente exists to provide **high-quality, affordable** health care services and to **improve the health** of our **members** and the **communities we serve**.



# Kaiser Permanente Entities Breakdown





# Kaiser Permanente Across the Country

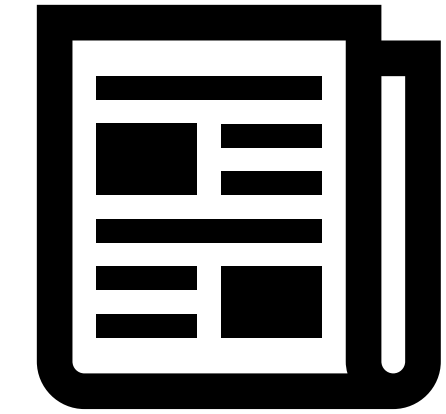
## KP Fast Facts (as of 9/30/19)

- Membership – **12.3 Million**
- Hospitals – **39**
- Employees – **218,297**
- Physicians – **23,271**
- Nurses – **63,306**
- Medical Offices & Other Facilities – **706**





# Kaiser Permanente In the News



## Kaiser Permanente puts Berkeley carpentry shop to use making face shields

In just two weeks, carpenters who usually make furniture delivered 11,800 face shields for doctors and nurses to use immediately at local medical facilities.

### HEALTH CARE

## Kaiser Permanente donates \$100M to help Black-owned businesses

### TECH

## Meditation app Calm is now free for Kaiser Permanente's millions of members

## Kaiser Permanente Commits \$63M to Support Contact Tracing in California

## Kaiser Permanente launches first coronavirus vaccine trial

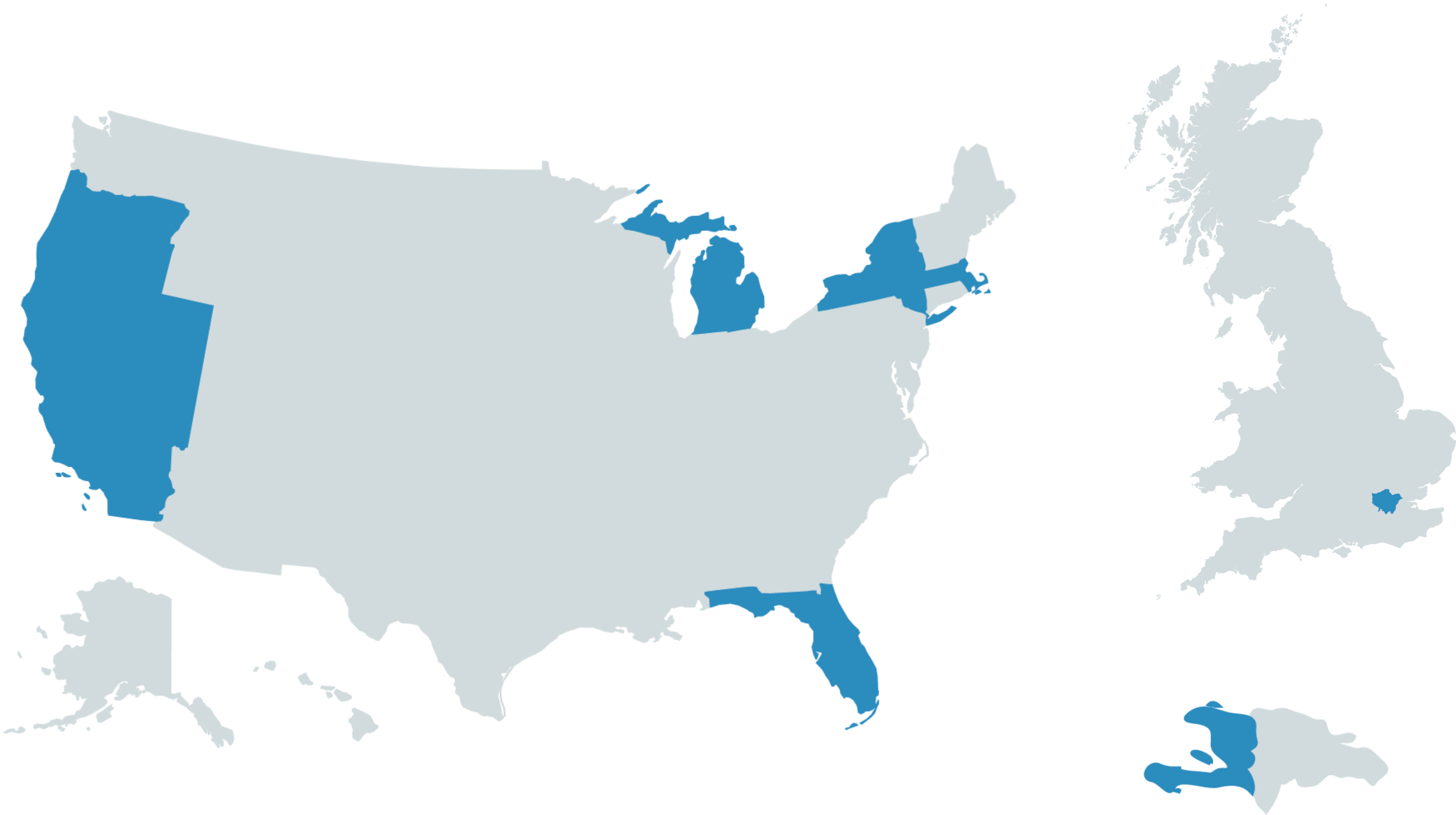


*Jennifer Haller, a clinical trial volunteer, receives the first-ever injection of an investigational vaccine for the coronavirus. Credit: Ted S. Warren / AP Photos*



# Introduction to the Fellowship Program: Where are we from?

- Oregon
- Nevada
- California
- Michigan
- Massachusetts
- New York
- Florida
- U.K.
- Haiti





# What will I get out of this Fellowship?

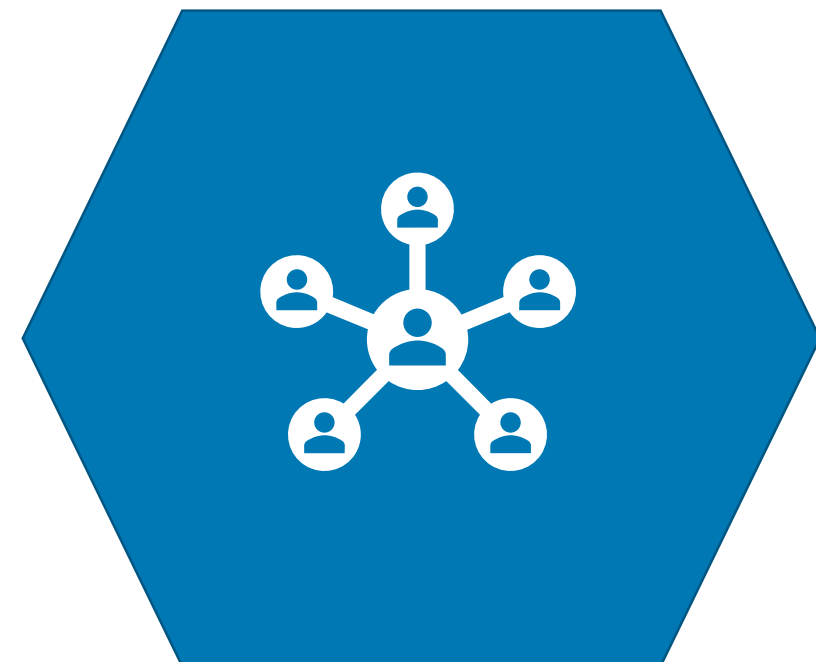
## Hospital and Health Systems Strategy & Operations

- Financial Performance
- Analytic Skills
- Performance Improvement
- Member Care Experience



## Professional Development

- Executive Leader Mentorship
- Networking
- Personalized Growth



## Leadership

- Managing in a Union Environment
- Physician and Staff Relations
- Communication Skills





# Kaiser Permanente Fellowship Regions

## Northern California

- **21** Medical Centers
- **255** Medical Office Buildings
- **4,389,705** Members

## Southern California

- **15** Medical Centers
- **232** Medical Office Buildings
- **4,613,881** Members

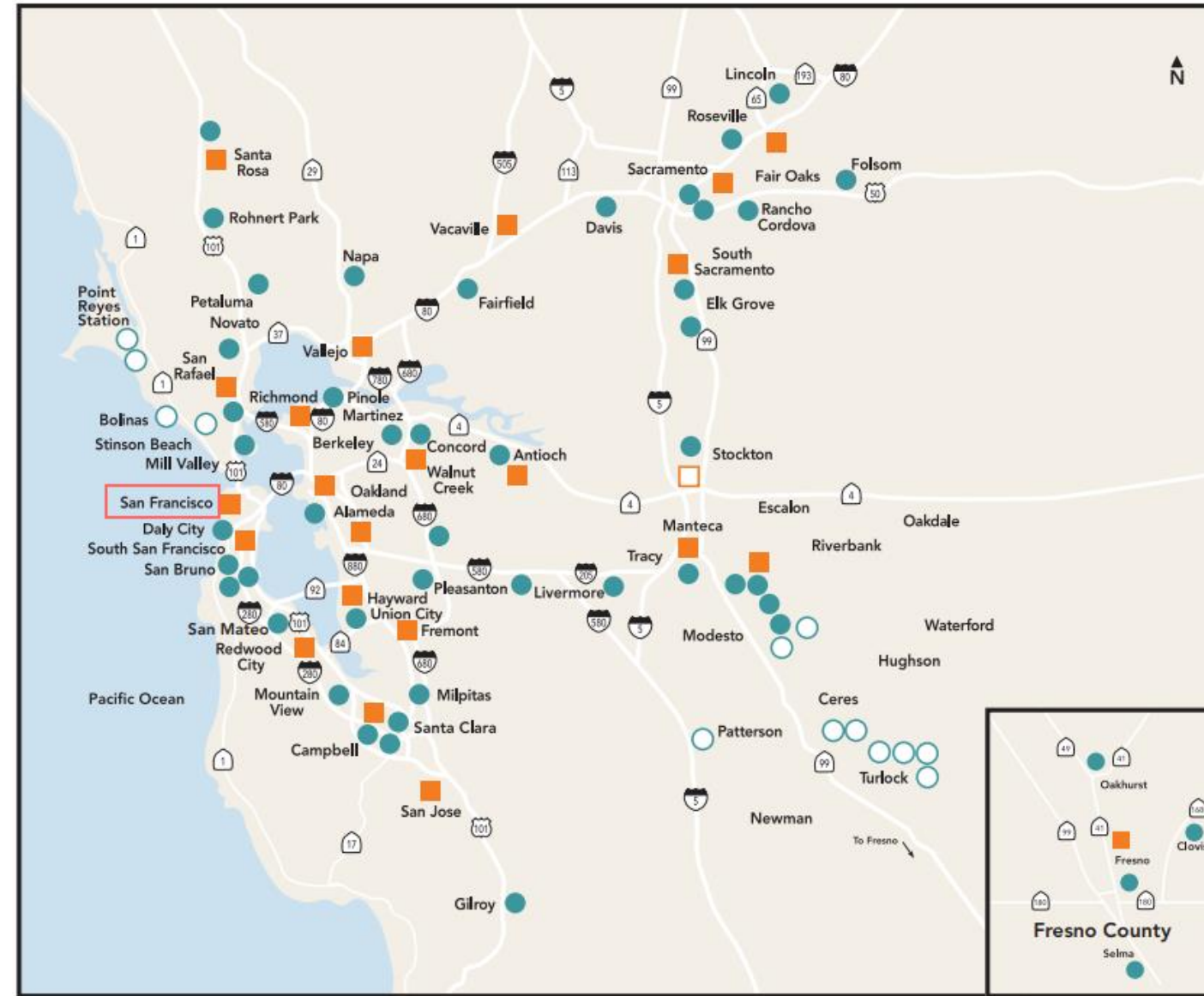


# Comparing Program Structure

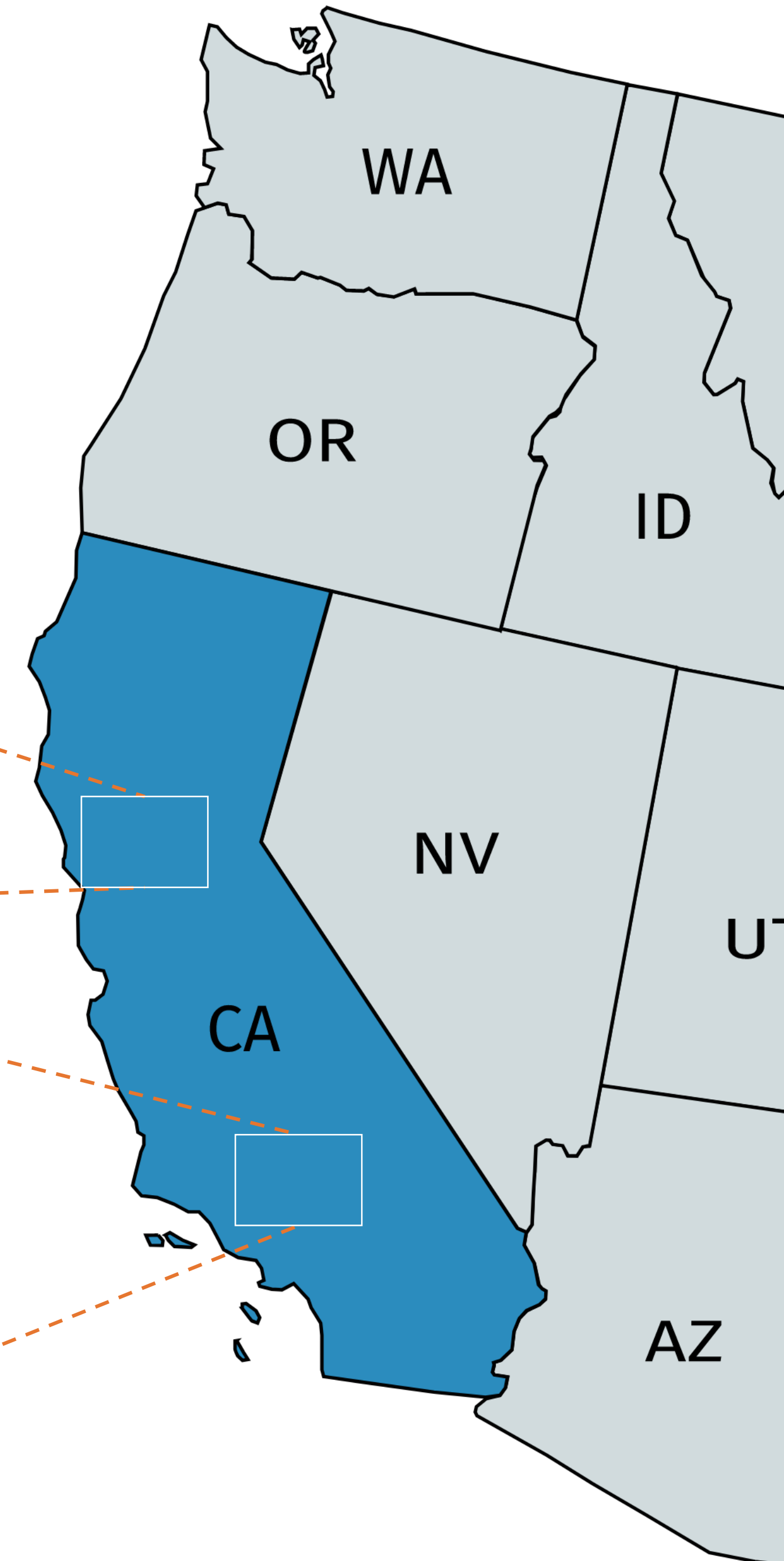
	NCAL	SCAL
Duration	12-18 months	24 months
# Fellows	3	4
Structure	<u>6 months each</u> 1. Medical Group 2. KFH 3. Regional Office (optional)	<u>8 months each</u> 1. Medical Group 2. Regional Office 3. KFH
Degree	All graduate degrees in healthcare administration (i.e. MHA, MPH, or MBA)	
Unique Features	Regional Days Biweekly Check-ins Program Office  Fellowship Exchange, Alumni & 2 <sup>nd</sup> Year buddies, Conference Funding, Senior Leader Meet & Greet, Robust Fellow Network, Social Events, PI Training	Touchpoint Series Monthly Selfcare Events Biweekly Check-ins

# NCAL

Regional Office:  
Oakland

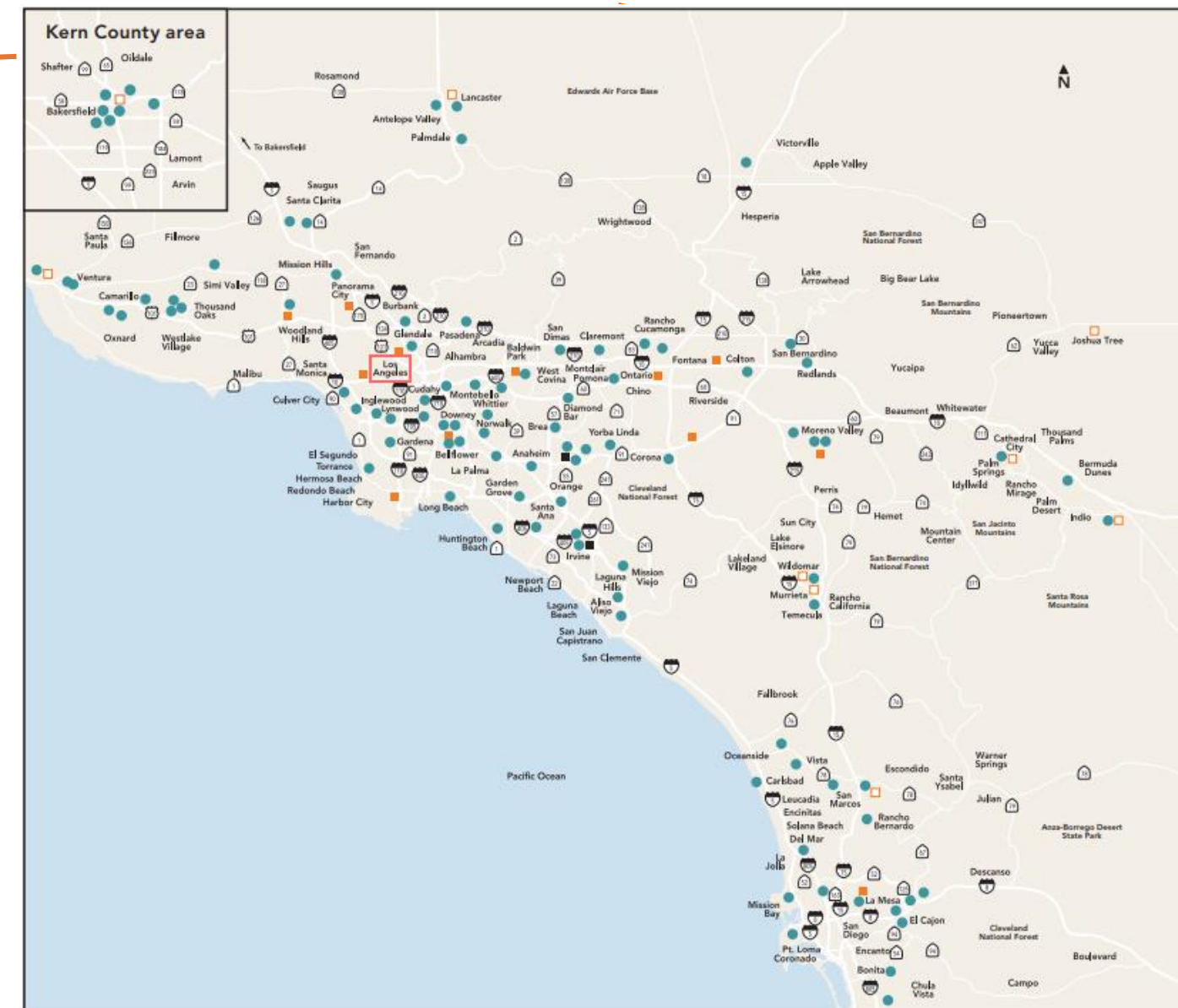


# Fellowship Locations



# SCAL

Regional Office:  
Pasadena





# SCAL Fellowship Experience

## Sofia Porter-Castro

### First Rotation: Woodland Hills Medical Center (KFH)

- Forecasted demand and utilization for a new, ten-suite surgical tower
- Implemented the regional Enhanced Recovery After Surgery (ERAS) methodology
- Supported Incident Command Center and emergency response initiatives
- Produced weekly COVID-19 Town Hall



### Second Rotation: Quality, Regulatory & Clinical Operations Support (KFH, Regional Offices)

- Co-leading a workstream for designing a new platform for delivering home care to KP members
- Overseeing roll-out of senior leader rounding practice across the SCAL region
- Enhancing community benefit resource system for KP physicians and staff





# NCAL Fellowship Experience: Travis Woodburn

## Why I chose the KP Administrative Fellowship:

- KP’s integrated model
- Access to progressive executive leadership team
- Tight-knit Fellowship Alumni Network

1 – Permanente Medical Group Oakland Medical Center	2 – Kaiser Foundation Hospital San Francisco Medical Center	3 – Regional Office: Delivery System Strategy
		
<ul style="list-style-type: none"><li>• Interim Manager- Head &amp; Neck Surgery and Urology</li><li>• Venture Program expansion</li><li>• Winter Surge Planning</li><li>• Work Stoppage and Contingency Planning</li></ul>	<ul style="list-style-type: none"><li>• Local Area Portfolio Management Office- Care Quality and Experience</li><li>• Social Work Resources in the Care Continuum</li><li>• COVID-19 Ambassador Coordination</li></ul>	<ul style="list-style-type: none"><li>• Surgical Backlog Reduction Planning</li><li>• Medical Services Contracting</li><li>• MOB Business Planning</li></ul>



## NCAL Fellowship Alumni



**Darian Harris, MHA**

- Director, Pediatrics & OB/GYN, San Jose Medical Center



**Mira Spaulding, MHA**

- Senior Consultant, TPMG Consulting Services, NCAL Regional Offices
- NCAL Fellowship Director



**Sam Bajaj, MHA, JD**

- Chief Operating Officer, San Jose Medical Center

## SCAL Fellowship Alumni



**Ciera Hall, MHA**

- Department Administrator, Pain Management, Employee Health, and Infectious Diseases



**Martha Augustin, RN, MHA**

- Department Administrator, Downtown Los Angeles Medical Office Building



**Kaine Kerkhoff, MHA**

- Assistant Medical Group Administrator, SCPMG Operations
- SCAL Fellowship Program Director

# Post-Fellowship Opportunities

- **Service Unit Manager, Department Administrator or Director**

- Permanente Medical Group
  - Primary Care *and* Specialty Services
- Inpatient Nursing\* (RN required)
- Support Services
- Care Experience
- Associate Area Portfolio Leader

- **Internal Consultant**

- Quality and Operations Support
- Business Consulting & Implementation
- Executive Consulting
- Managerial Consulting

- **Project/Program Manager**

- Medical/Dental Integration
- Practice Leader

- **Finance**

- Senior Financial Analyst





# Application Timeline

## How to Apply

- Apply online at <http://adminfellowship.kp.org>

## Qualifications

- Graduate degrees conferred between **July 1, 2020 - June 30, 2021**
  - Degrees from accredited programs are preferred.

## Application Materials

- Resume, essay, personal statement
- 2 letters of recommendation (academic and professional)
- Unofficial graduate transcript

**Application Opens**  
August 1, 2020

**Application Due**  
September 13, 2020

**Decision**  
Oct/Nov 2020

**Start Date**  
June/July 2021



## Q & A

- Go to **www.sli.do** on your desktop or mobile phone browser.
- Type in event code **38875**.
- Ask questions and upvote your favorite!



Kaiser Permanente Administrative Fellows 2019-2021



# Contact Us

For more information, please visit our website [adminfellowship.kp.org](http://adminfellowship.kp.org)

To contact us, please send us a message at:



**NCAL**

[ncal.kp-fellowship@kp.org](mailto:ncal.kp-fellowship@kp.org)

**SCAL**

[scal.kp-fellowship@kp.org](mailto:scal.kp-fellowship@kp.org)